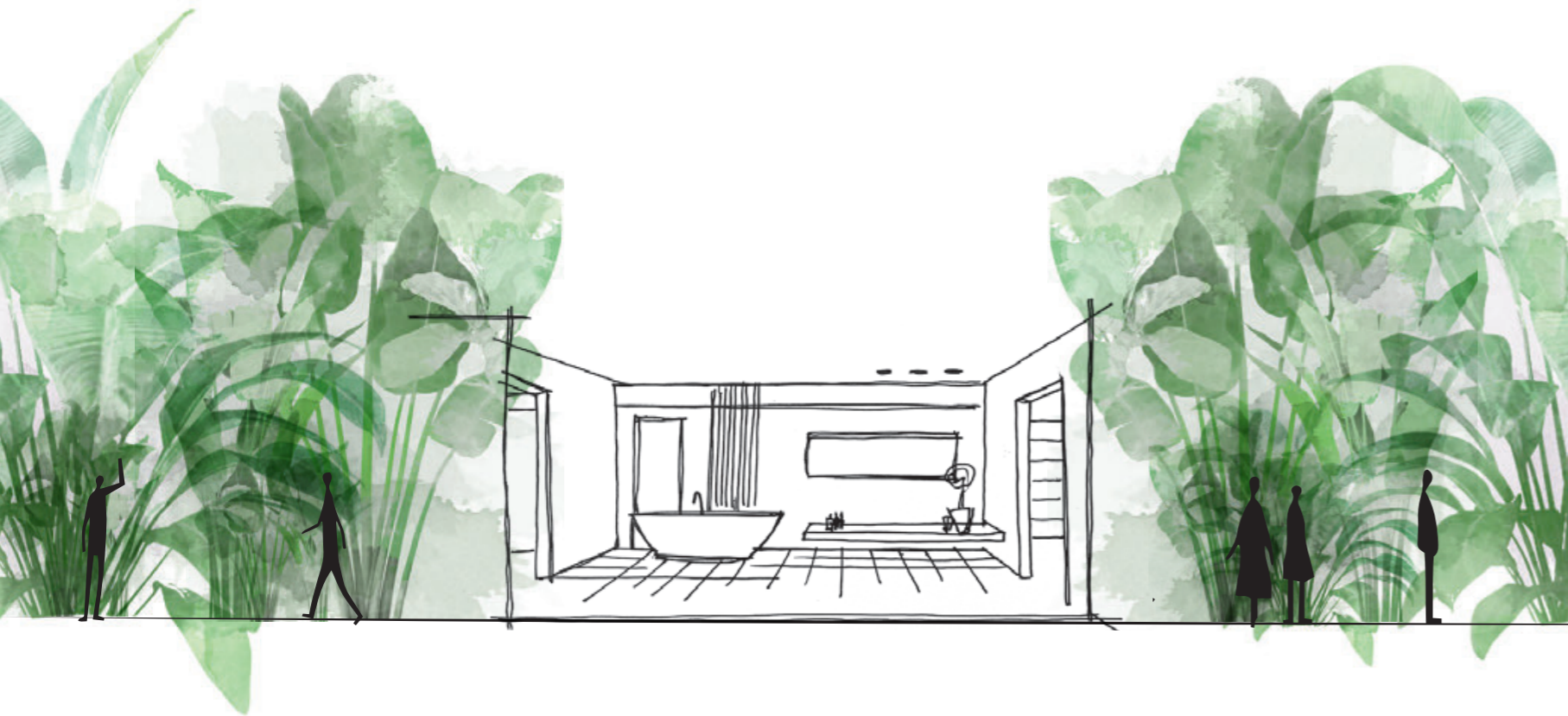


SABLE

PureOrigins



Sabbia, elemento primordiale,
sintesi della natura tra mare e terra.

Sand, primordial element,
the synthesis of nature between sea and land.



Floor / Sable Cement 120120
Wall / Sable Cement 120120

Sable è l'esperienza di una dimensione immersiva dell'ambiente, dove la superficie prende forza dalla sua componente tattile, respira e crea spazio, fonde le distanze e al contempo le amplifica, per esaltare tutti i componenti dell'ambiente e il carattere di ogni luogo. Nasce per il design contemporaneo, per contribuire alle grandi possibilità espressive dei luoghi che parlano di noi.

Sable is the experience of an immersive dimension of the environment where the surface gets its force from its tactile component, it breathes and creates space, it merges distances and at the same time amplifies them, to bring out every component of the space and the character of every place. It was created for contemporary design to contribute to the great expressive possibilities of the places that speak about us.



Floor / Sable Cement 120120
Wall / Sable Cement 120120



Floor / Sable Greige 120120
Wall / Sable Greige 120120



Sable Greige 120120

Porcelain Rectified	Gres porcellanato Rettificato	Feinsteinzeug Kalibriert	Grès cérame Rectifié	Керамогранит Ректифицированная		
Nat	RET V2 5	R10 A ASTM DCOF			10mm	EN 14411 APPENDICE G Bla GL
Kry	RET V2 4				10mm	EN 14411 APPENDICE G Bla GL
As	RET V2 5	R11 A+B+C ASTM DCOF	PTV≥ 36 ***		10mm	EN 14411 APPENDICE G Bla GL
As 2.0	RET V2 5	R11 A+B+C ASTM DCOF	PTV≥ 36 ****		20mm	EN 14411 APPENDICE G Bla UGL

Colours Colori • Farben • Couleurs • Цветов

Light



Cement



Pearl



Grey



Greige



Surfaces Superfici • Oberflächen • Surfaces • Поверхности

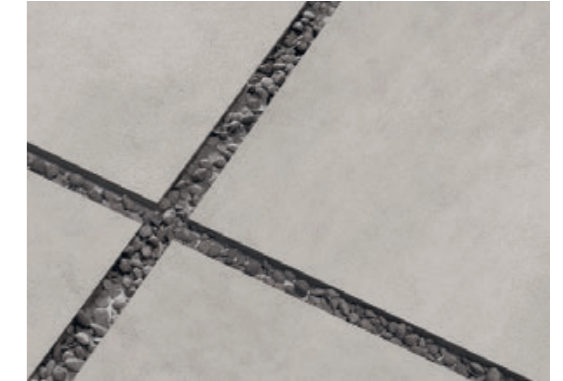
Safe Plus Antiviral & Antibacterial Surface



As Antislip 10mm



As 2.0 Antislip 20mm



Number of patterns

Numero di grafiche • Grafische Nummer • Nombre d'images • Количество графических оформлений

120x120 48"x48"	30	60x120 24"x48"	40	As 60x120 24"x48"	40	90x90 36"x36"	40	60x60 24"x24"	55	Antique 60x180 24"x72"	12	As 2.0 60x120 24"x48"	40
-----------------	----	----------------	----	-------------------	----	---------------	----	---------------	----	------------------------	----	-----------------------	----

Pendulum Friction Test - BS 7976

Metodo del Pendolo

- * Determination of slip resistance of pedestrian surfaces; it does not coversports surfaces and road surfaces for vehicles (skid resistance).
 Determinazione della resistenza allo scivolamento delle superfici pedonabile; non si applica alle pavimentazioni sportive ed alle pavimentazioni stradali veicolabili.
- ** Anti-slip performance is guaranteed at the time of delivery of the product.
 Le presetazioni Anti-slip vengono garantite al momento della consegna del prodotto.
- *** Pendulum Friction Test - AS 4586 / UNE-ENV 12633 on demand / su richiesta.

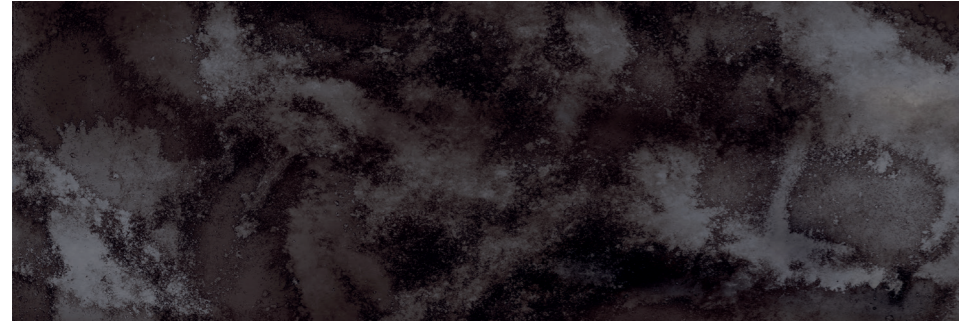
Sizes Formati • Formate • Format • Форматы

	120x120 48"x48"	60x120 24"x48"	90x90 36"x36"	60x60 24"x24"	10mm
Surface	NAT	NAT	AS	NAT	NAT
Light	Sable Light 120120 CSASAL1212	Sable Light 60120 CSASABLI12	Sable Light 60120 As CSASALAS12	Sable Light 9090 CSASABLI90	Sable Light 6060 CSASABLI60
Cement	Sable Cement 120120 CSASCE1212	Sable Cement 60120 CSASABCE12	Sable Cement 60120 As CSASACAS12	Sable Cement 9090 CSASABCE90	Sable Cement 6060 CSASABCE60
Pearl	Sable Pearl 120120 CSASPE1212	Sable Pearl 60120 CSASABPE12	Sable Pearl 60120 As CSASAPAS12	Sable Pearl 9090 CSASABPE90	Sable Pearl 6060 CSASABPE60
Grey	Sable Grey 120120 CSASAY1212	Sable Grey 60120 CSASABGY12	Sable Grey 60120 As CSASAYAS12	Sable Grey 9090 CSASABGY90	Sable Grey 6060 CSASABGY60
Greige	Sable Greige 120120 CSASAG1212	Sable Greige 60120 CSASABGR12	Sable Greige 60120 As CSASAGAS12	Sable Greige 9090 CSASABGR90	Sable Greige 6060 CSASABGR60
Pz / Box	2	2		2	4
Mq / Box	2,88	1,44		1,62	1,44
Kg / Box	64,8			36,4	32,4
Kg / Mq	22,5	22,5		22,5	22,5
Boxes / Pallet	16	24		20	30
Mq / Pallet	46,08	34,56		32,4	43,2
Kg / Pallet	1.037	778		728	972

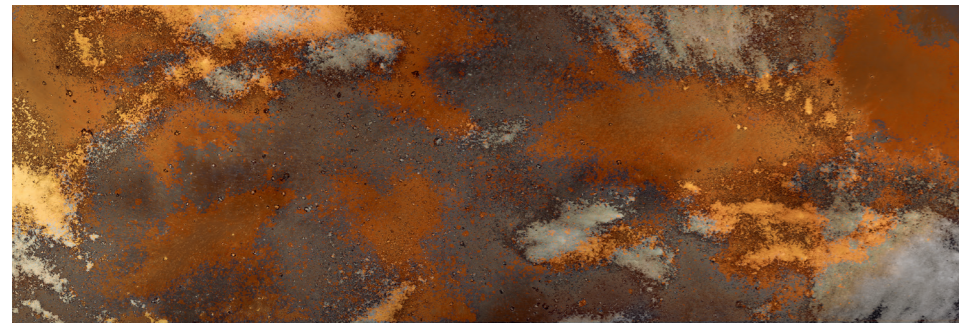
Special Trims • Pezzi Speciali • Formteile • Pièces spéciales • Специальные Изделия

	60x120 24"x48"	Battiscopa 90 7,3x90 3"x36"	Battiscopa 60 7,3x60 3"x24"	Gradone 120 33x120 13"x48"	Ang. Gradone 120 Sx 33x120 13"x48"	Ang. Gradone 120 Dx 33x120 13"x48"	10mm
AS 2.0	Sable Light 60120 As 2.0 CSASAL1212	NAT	NAT	NAT	NAT	NAT	
		Battiscopa 90 Sable Light CSABSALI90	Battiscopa 60 Sable Light CSABSALI60	Gradone 120 Sable Light CSAGSALI12	Ang. Gradone 120 Sx Sable Light CSAGASSL12	Ang. Gradone 120 Dx Sable Light CSAGADSL12	
		Sable Cement 60120 As 2.0 CSASACE212	Battiscopa 90 Sable Cement CSABSACE90	Gradone 120 Sable Cement CSAGSACE12	Ang. Gradone 120 Sx Sable Cement CSAGASSC12	Ang. Gradone 120 Dx Sable Cement CSAGADSC12	
		Sable Pearl 60120 As 2.0 CSASAPE212	Battiscopa 90 Sable Pearl CSABSAPPE90	Gradone 120 Sable Pearl CSAGSAPE12	Ang. Gradone 120 Sx Sable Pearl CSAGASSP12	Ang. Gradone 120 Dx Sable Pearl CSAGADSP12	
		Sable Grey 60120 As 2.0 CSASAGY212	Battiscopa 90 Sable Grey CSABSAGY90	Gradone 120 Sable Grey CSAGSAGY12	Ang. Gradone 120 Sx Sable Grey CSAGASSY12	Ang. Gradone 120 Dx Sable Grey CSAGADSY12	
		Sable Greige 60120 As 2.0 CSASAGR212	Battiscopa 90 Sable Greige CSABSAGR90	Gradone 120 Sable Greige CSAGSAGR12	Ang. Gradone 120 Sx Sable Greige CSAGASSG12	Ang. Gradone 120 Dx Sable Greige CSAGADSG12	
	1	8	14	2	1	1	
	0,72						
	32,4						
	45						
	24						
	17,28						
	778						

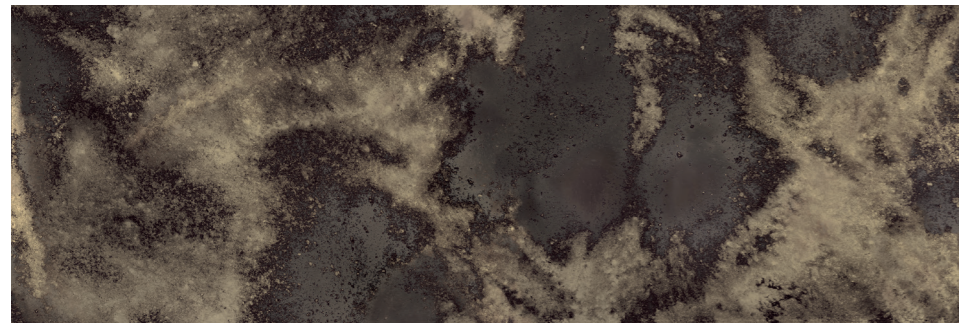
Decors&Accessories



60x180 24"x72"
 Antique 01 60180 Kry

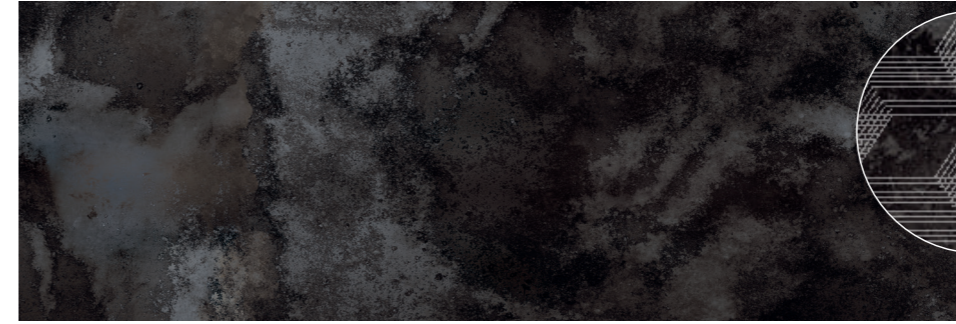


60x180 24"x72"
 Antique 02 60180 Kry

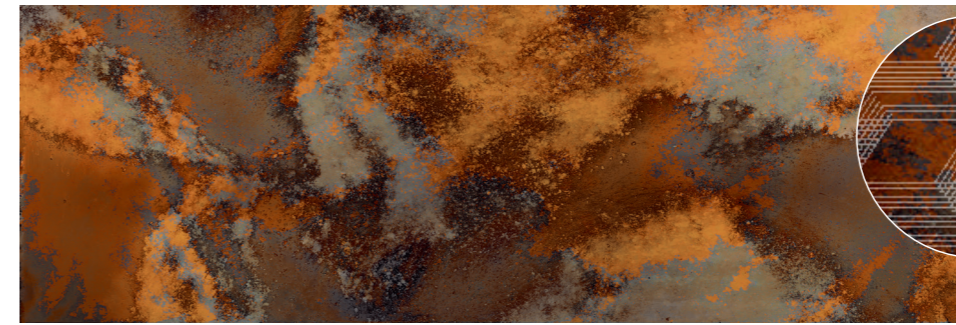


60x180 24"x72"
 Antique 03 60180 Kry

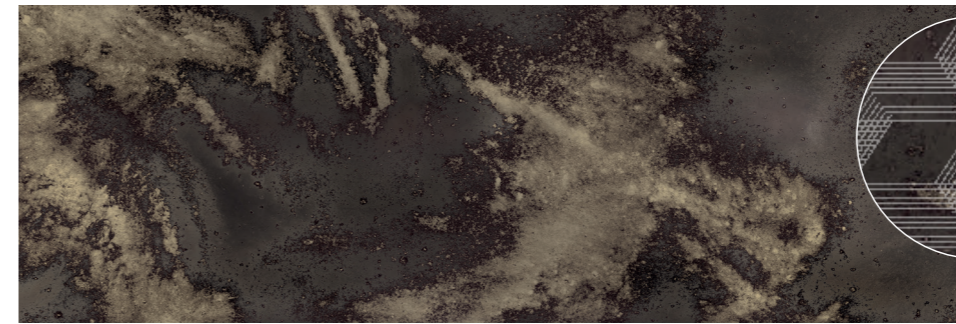
Decors&Accessories



60x180 24"x72"
 Antique 01 Decor 60180



60x180 24"x72"
 Antique 02 Decor 60180



60x180 24"x72"
 Antique 03 Decor 60180

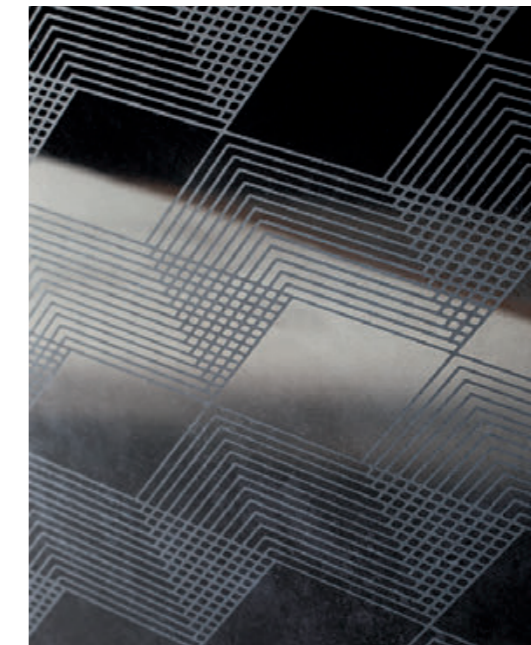
Decors&Accessories

	60x180 24"x72" KRY	Decor 60x180 24"x72" KRY
	Antique 01 60180 Kry CSAANT0118	Antique 01 Decor 60180 CSAANTD118
	Antique 02 60180 Kry CSAANT0218	Antique 02 Decor 60180 CSAANTD218
	Antique 03 60180 Kry CSAANT0318	Antique 03 Decor 60180 CSAANTD318
Pz / Box	2	2
Mq / Box	2,16	2,16
Kg / Box	48,6	48,6
Kg / Mq	22,5	22,5
Boxes / Pallet	24	24
Mq / Pallet	51,84	51,84
Kg / Pallet	1.166	1.166

Krystal Technology



Decor



Decors&Accessories



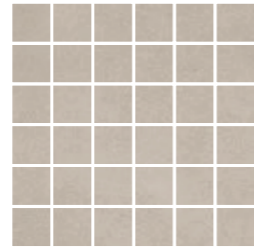
Mosaico Sable Light
30x30 12"x12"



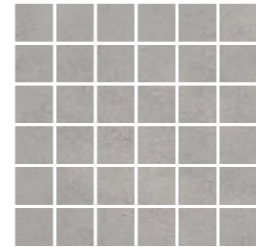
Mosaico Sable Pearl
30x30 12"x12"



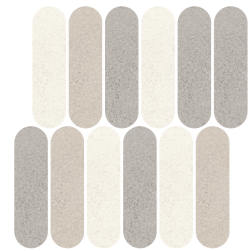
Mosaico Sable Cement
30x30 12"x12"



Mosaico Sable Greige
30x30 12"x12"



Mosaico Sable Grey
30x30 12"x12"



Shape Sable Mix 01
32x32 13"x13"



Shape Sable Mix 02
32x32 13"x13"

* On net
Montato su rete
Auf Netz
Sur trame
Собрана на сетке

Certifications

Certificazioni • Zertifizierungen • Certifications • Сертификаты



Static coefficient of friction
ASTM test
ASTM C1028 - 06

Dynamic coefficient of friction
DCOF AcuTest®
ANSI A137.1 - 2012

Dry $\mu > 0,6$ Wet $\mu > 0,6$
Natural Surface - Antislip

WET $\geq 0,42$
Natural Surface - Antislip

Decors&Accessories

Surface	Mosaico 30x30 12"x12"	Shape Mix 32x32 13"x13"
	NAT	NAT
Light	Mosaico Sable Light CSAMSALI30	
Cement	Mosaico Sable Cement CSAMSACE30	Shape Sable Mix 01 CSASHSMX01
Pearl	Mosaico Sable Pearl CSAMSAP30	Shape Sable Mix 02 CSASHSMX02
Grey	Mosaico Sable Grey CSAMSAGY30	
Greige	Mosaico Sable Greige CSAMSAGR30	
Pz / Box	6	6
Mq / Box	0,54	0,57
Kg / Box	11,8	12,8
Kg / Mq	21,9	22,5
Boxes / Pallet	60	60
Mq / Pallet	32,4	34,2
Kg / Pallet	708	768

Suggestion for laying

Consigli per la posa • Ratschläge für die Verlegung • Conseil pour la pose • Советы по укладке

Considering the characteristics of this series we suggest:

- 2-3 mm joint
- For the sizes 30x60 lined up laying or 3/4 staggered laying is suggested
- For the sizes 60x120 lined up laying or 4/5 staggered laying is suggested

Vu les caractéristiques de la série, nous conseillons :

- Joint 2-3 mm
- Pour les formats 30x60, il est conseillé une pose alignée ou une pose décalée au 3/4
- Pour les formats 60x120, il est conseillé une pose alignée ou une pose décalée au 4/5

Viste le caratteristiche della serie si consiglia:

- Fuga 2-3 mm
- Per i formati 30x60 si consigliano pose affiancate o a correre sfalsate di 3/4
- Per i formati 60x120 si consigliano pose affiancate o a correre sfalsate di 4/5

В силу характеристик данной серии рекомендуется:

- Шов 2-3 мм
- Для форматов 30x60 рекомендуется укладка рядами или со смещением на 3/4
- Для форматов 60x120 рекомендуется укладка рядами или со смещением на 4/5

Im Hinblick auf die Eigenschaften der Serie es empfiehlt sich:

- 2-3 mm Fuge
- Für Formate 30x60 neben verlegt oder 3/4 versetzt
- Für Formate 60x120 neben verlegt oder 4/5 versetzt