

MANHATTAN 

LIGHT

SAND

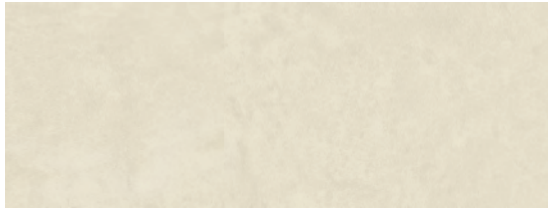


Revestimiento · Pasta Blanca  
Wall Tile · White Body

BIII / ISO 13006 - L

MANHATTAN

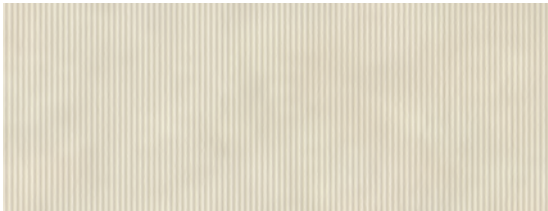
45x120 cm 17.7x47.2 inches



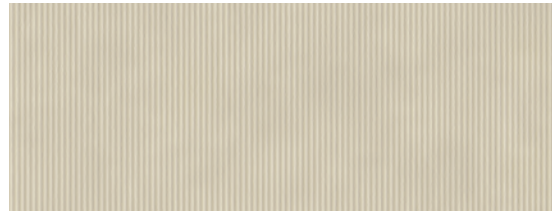
Manhattan-R Light  
G.172



Manhattan-R Sand  
G.172

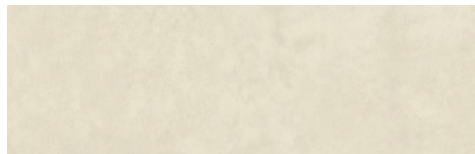


Tribeca-R Ivory  
G.202

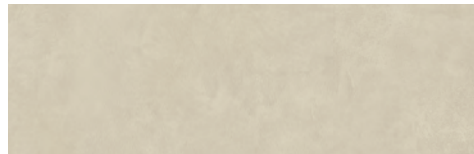


Tribeca-R Ash  
G.202

32x99 cm 12.6x39 inches



Manhattan-R Light  
G.131



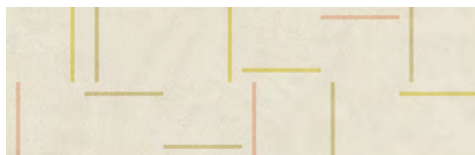
Manhattan-R Sand  
G.131



Coney-R Light  
G.202



Coney-R Sand  
G.202



(1) Flatiron-R Light  
(2) G.245



(1) Flatiron-R Sand  
(2) G.245

45x30 cm 17.7x11.8 inches



(\*) Queens Light  
G.94



(\*) Queens Sand  
G.94

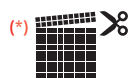
32x30 cm 12.6x11.8 inches



(\*) Queens Light  
G.71



(\*) Queens Sand  
G.71



Enmallado  
Meshmounted

(1) Este modelo está compuesto por diseños diferentes para combinar de modo alterno, se sirven en la misma caja. This model has different designs that are combined alternately, coming in the same box.  
(2) Este modelo tiene tres tintas especiales metálicas: oro, oro viejo y cobre. This model has three special metallic inks: gold, old gold and bronze.

MANHATTAN				CAJA / BOX				PALET / PALLET			
		FORMATOS	SIZE	PIEZAS / PIECES	M <sup>2</sup>	ML	KG	CAJA / BOX	M <sup>2</sup>	ML	KG
	11	32x30 cm	12.6x11.8 inches	10	0,96	-	18,76	30	28,80	-	562,80
	11	45x30 cm	17.7x11.8 inches	4	0,54	-	10,15	48	25,92	-	487,40
	11	32x99 cm	12.6x39 inches	4	1,27	-	24,20	44	55,75	-	1064,80
	11	45x120 cm	17.7x47.2 inches	2	1,08	-	21	35	37,8	-	735